

# Ulbotech

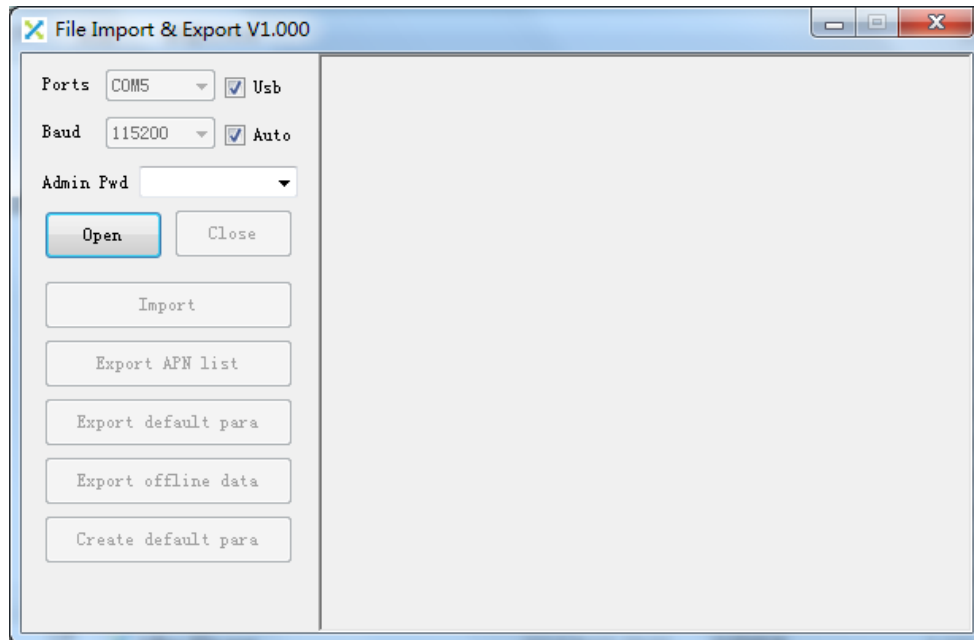
File Import & Export  
Software

## **User Manual**

V1.000

# 1. Summary

File Import & Export software is a PC software dedicated to the import and export files from Ulbotech's tracking device. It can be used to import the APN list file, device configuration command file, the default parameter file and firmware, at the same time, it can support export APN list file, the default parameters file and the device storage off-line data.



APN list file are used for device to identify the SIM card servicer automatically. Then even so when user changed his SIM card with different servicer, he doesn't need to configurate APN settings.

Device configuration command file are used for batch settings of the devices .User edited configuration files, after import into the device, all parameters of the devices can be set accordingly.

The default configuration parameter file to provide the device configuration parameters in using the "RFD" command for devices. When the device is not import the default parameter file, using the "RFD" command to restore the factory settings.

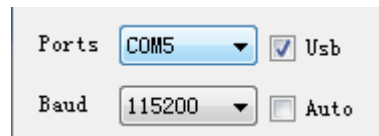
The firmware file are used for the device firmware upgrading. Device will appoint the hardware version and software version information of the firmware to ensure the compatibility between firmware and hardware, the upgrading sequence of hardware.

Purpose to ensure the device reliability and safety, the operating of the file import and export must with the super administrator authority.

## 2. Entry import and export file status

### 2.1 Select serial port

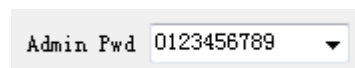
The device can automatically scan and identify the serial port, can also manually choose the serial port and baud rate:



Ports: COM5 ☒ Usb  
Baud: 115200 ☐ Auto

### 2.2 Input password of the super administrator

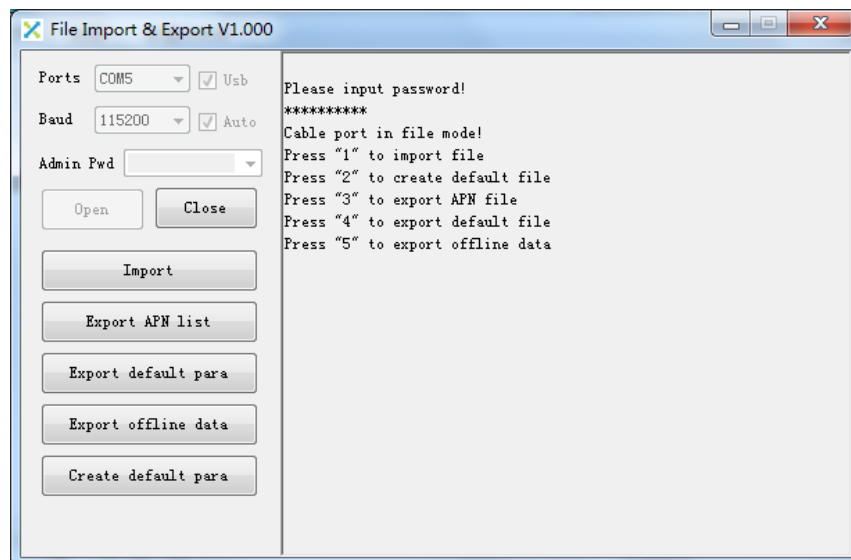
Input the super administrator password in the "Admin Pwd" box. If password is empty, device will try to use the factory default password "0123456789" to connect to device:



Admin Pwd 0123456789

### 2.3 Connect to device

Click "Open" button to connect to device. After connection successful, all import and export buttons are availability to import or export files:



File Import & Export V1.000

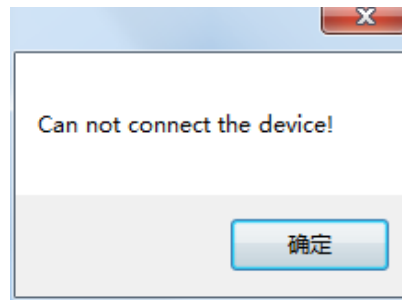
Ports: COM5 ☒ Usb  
Baud: 115200 ☒ Auto  
Admin Pwd:   
Open Close  
Import  
Export APN list  
Export default para  
Export offline data  
Create default para

Please input password!  
\*\*\*\*\*  
Cable port in file mode!  
Press "1" to import file  
Press "2" to create default file  
Press "3" to export APN file  
Press "4" to export default file  
Press "5" to export offline data

In case password error, device will point out password error, user need to recheck password:

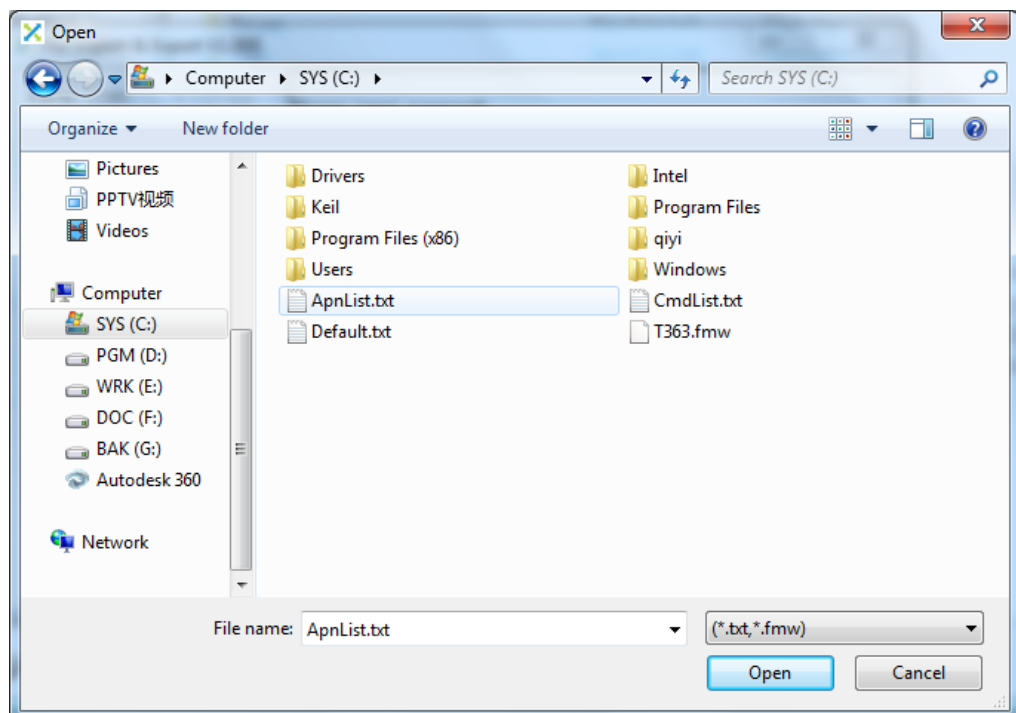


If cannot connect the device, need to check if device connected with PC or connect to device again.

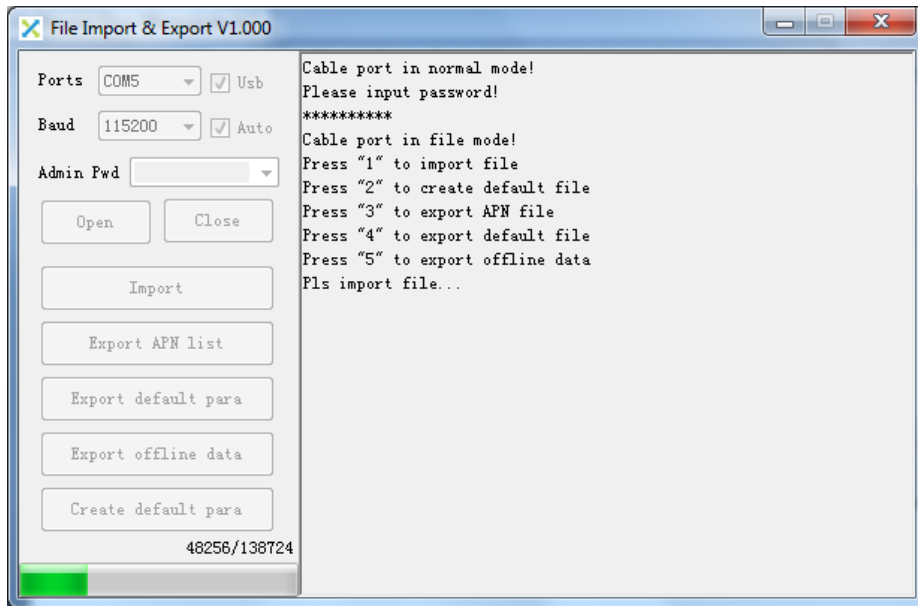


### 3. Import files

Drag the file to the software window directly or click "Import" button, pop open file box:



Select the target file to click "Open" button to start import operation:

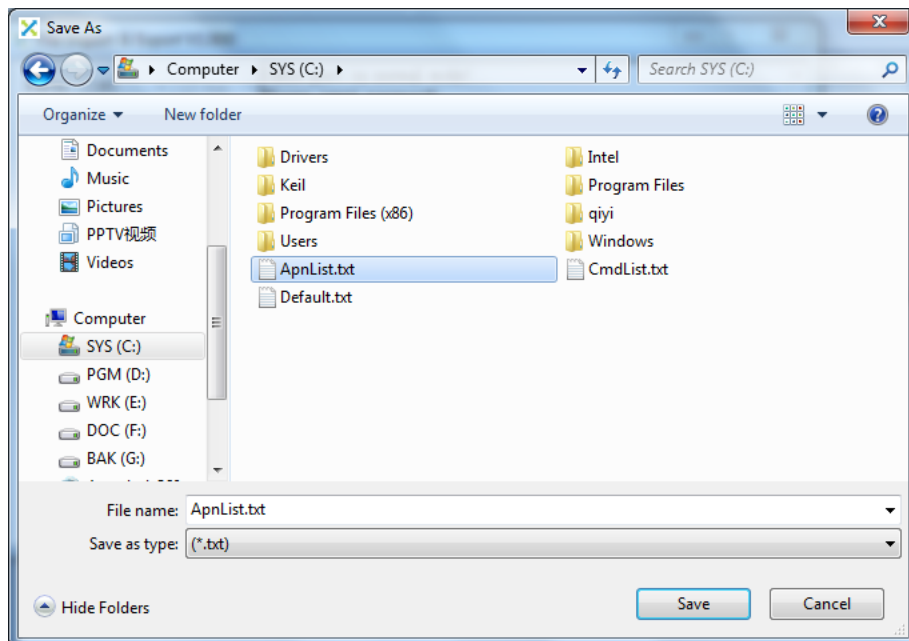


After finished the import operation, the operation button will continue to become effective, user can be followed by other import and export operation.

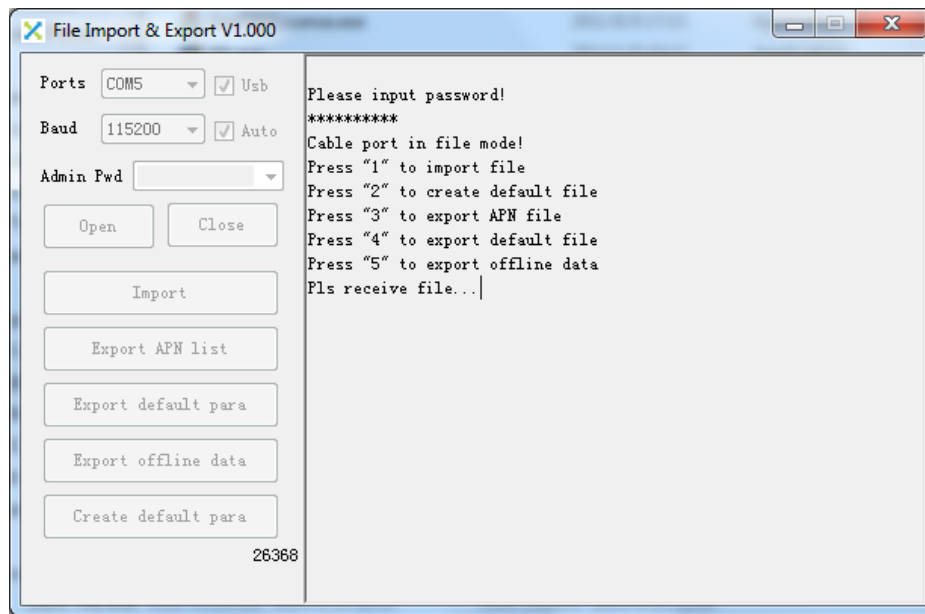
**Attention:** After imported the firmware file, the device will automatically restart and start to update the firmware. In case need for subsequent operations, please reconnect the device.

## 4. Export files

Select the target file to click, pop open "Save As" file dialog box:



Select the save path and name of the file, click "Save" button to start operation:



After export operation, the operation button will continue to become effective, user can be followed by other import and export operation.

## 5. Set up the default parameter file

After configuration device, click "Create default para" button, device will establish a default parameter file based on current configuration information.

After the file down, it can be export file and import into other device.

